

Rolling Barrage 2018
Road Captain's Sheet for Winnipeg, MB
Monday 14 August 2018

Here are the salient points for today's ride, starting from Thunder Bay, Ontario and ending in Winnipeg Manitoba, a distance of 726 km.

ITEM	Timings	LOCATION	REMARKS
Registration	0700 hrs	Days Inn, 645 Sibley Dr. Thunder Bay, ON 807-622-3297	Registration /Safety Briefing
KSU	0800 hrs	Days Inn, 645 Sibley Dr. Thunder Bay, ON 807-622-3297	Depart 0800hrs
Halt 1 (141 km, 1 hr, 40min)	0940 hrs	Upsala Esso On-17, Tans-Canada Hwy, Upsala ON	Gas and bathroom. Depart @ 1010 hrs
Halt 2 (212 km 2 hrs 30min) Time change back 1 hr	1140 hrs	Husky Dryden ON 379 Government St., Dryden ON	Gas and Lunch Registration /Safety Briefing Depart @ 1300 hrs
Halt 3 (198 km, 2 hr 10min)	1510 hrs	Esso Provincial Trunk Hwy 44 Whiteshell, MB	Link with Team Manitoba Registration /Safety Briefing Depart @ 1540 hrs
Halt 4 (126 km, 1hr 20min)	1700 hrs	Centre of Canada Park Tache, MB	Photo Op at Centre of Canada Depart @ 1720 hrs
Arrive at release point (54 km, 40 mins)	1800hrs	Howard Johnson, 3740 Portage Ave Winnipeg MB (204) 272-4169	
Hotel /Accommodations		Howard Johnson, 3740 Portage Ave Winnipeg MB (204) 272-4169	

Registration Points

Days Inn, 645 Sibley Dr. Thunder Bay, ON

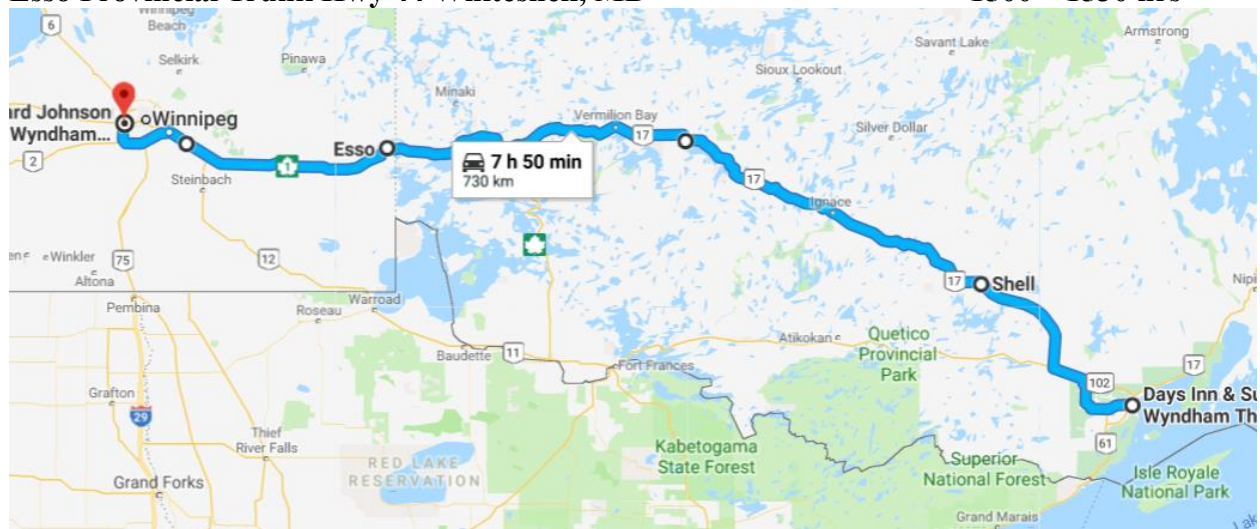
0700 – 0745 hrs

Husky 379 Government St., Dryden ON

1130 – 1200 hrs

Esso Provincial Trunk Hwy 44 Whiteshell, MB

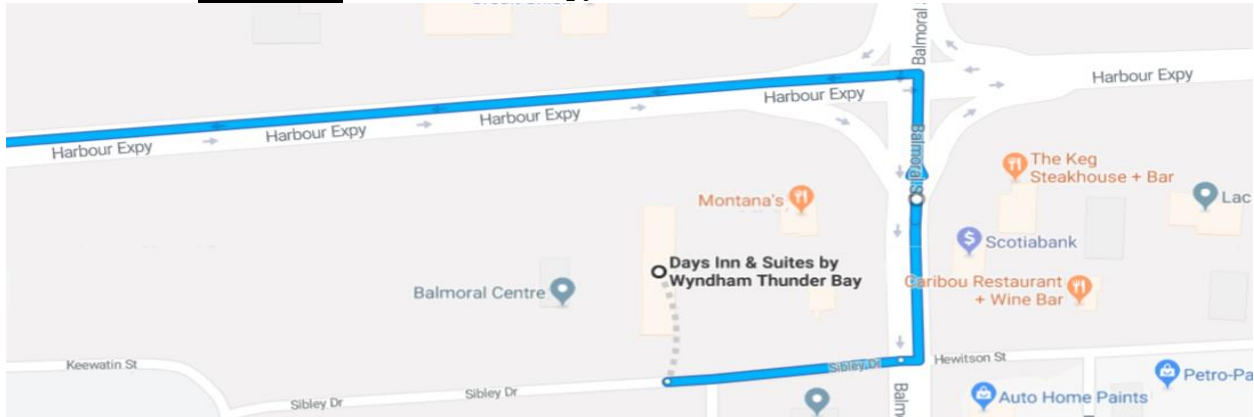
1500 – 1530 hrs



<https://goo.gl/maps/rwDYKgyGb112>

1. Days Inn & Suites by Wyndham Thunder Bay 645 Sibley Dr, Thunder Bay, ON 141km

- a. Head east on Sibley Dr toward Barton St 140m
- b. **Turn left** onto Balmoral St 130m
- c. **Turn left** onto Harbour Expy 2.3km



- d. Continue onto Trans-Canada Hwy W/ON-11 W/ON-17 W 138km

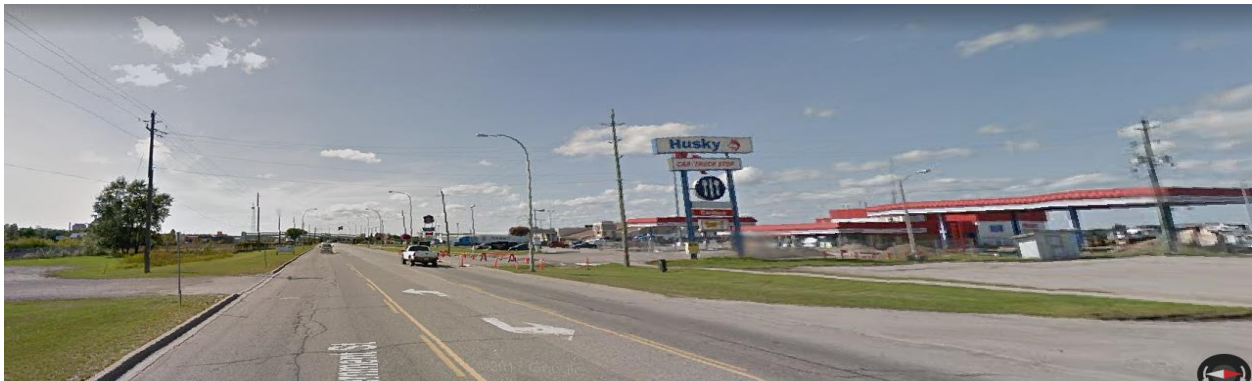
Destination on left



2. Shell ON-17, Trans-Canada Hwy, Upsala, ON 212km

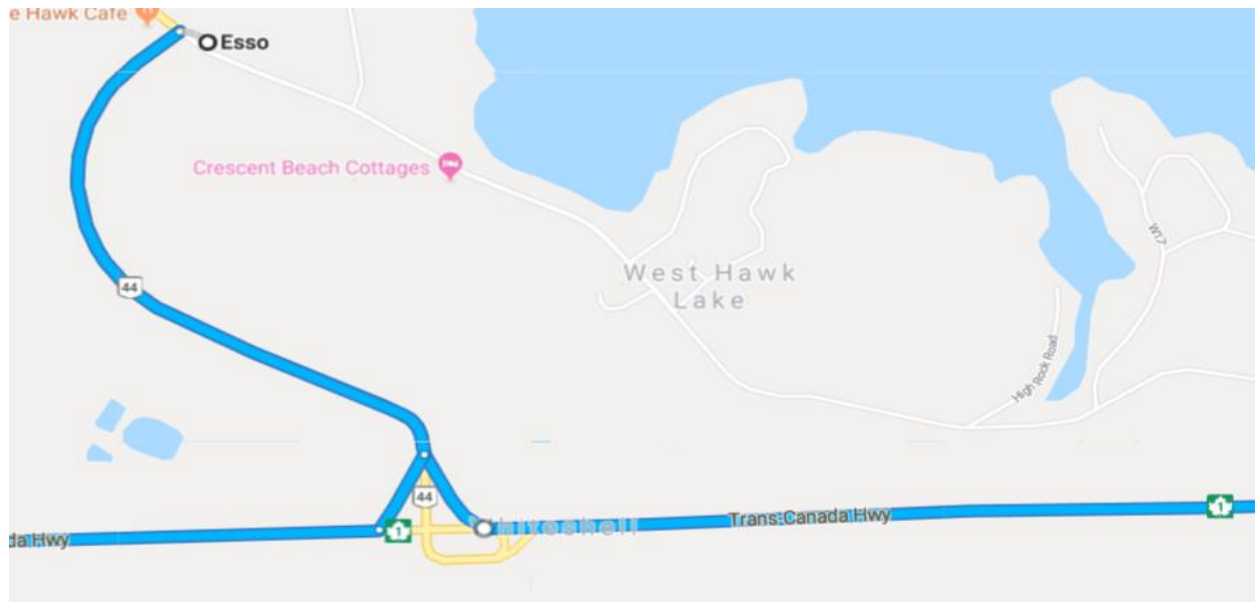
- a. Continue on Trans-Canada Hwy/ON-17 212km

Destination on Right



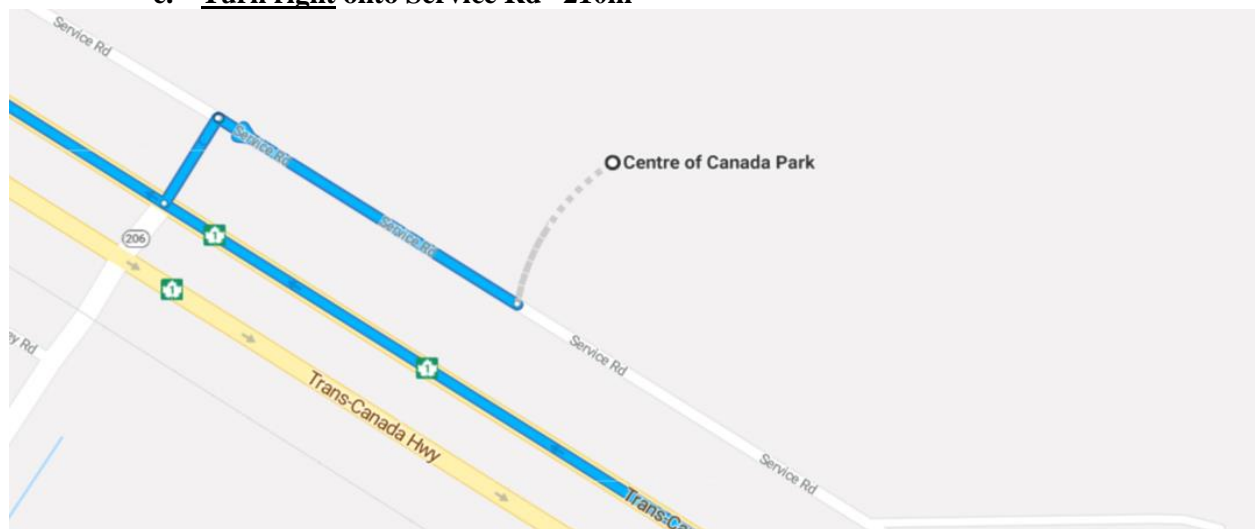
3. Husky, 379 Government St., Dryden ON 198km

- a. Turn right onto Government St/Trans-Canada Hwy/ON-17 W 1.2km
- b. Continue onto Trans-Canada Hwy/ON-17 W 119km
- c. Continue straight onto ON-17A W 33.6km
- d. Continue onto Trans-Canada Hwy/ON-17 W 42.7km
- e. Exit onto Provincial Trunk Hwy 44 W/MB-44 W toward West Hawk Lake 1.5km



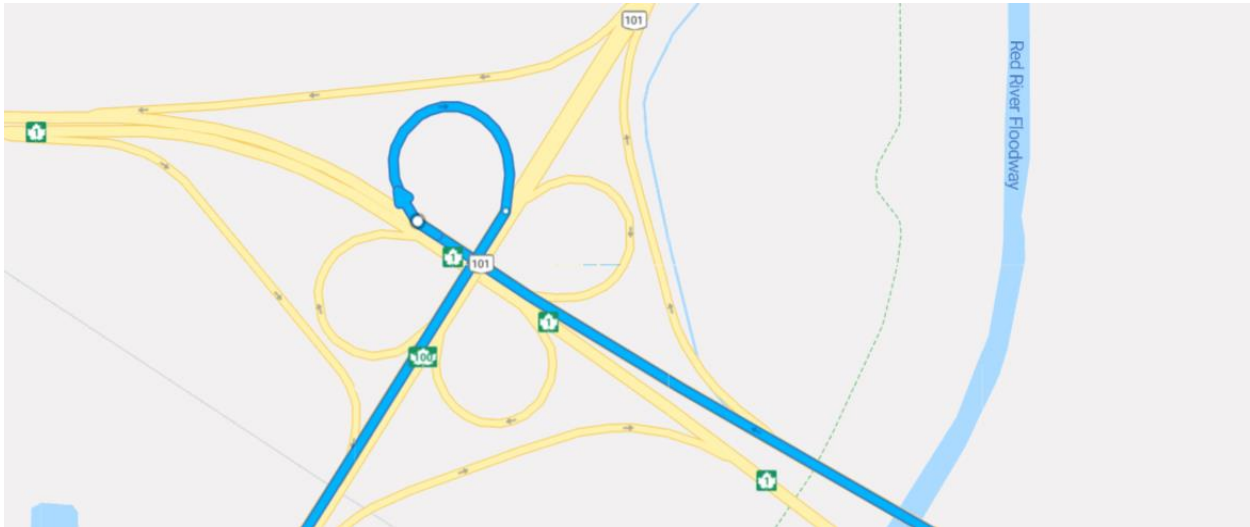
4. Esso Provincial Trunk Hwy 44, Whiteshell, MB R0E 2H0 126km

- a. Head southwest on Provincial Trunk Hwy 44 E 1.3km
- b. Turn right onto the MB-1 W/Trans-Canada Highway ramp to Winnipeg 190m
- c. Merge onto Trans-Canada Hwy/MB-1 W 124km
- d. Turn right at MB-206 N 60m
- e. Turn right onto Service Rd 210m



5. Centre of Canada Park Taché, MB R0A 0Y0 54km

- a. Head northwest on Service Rd 210m
- b. Turn left toward Trans-Canada Hwy/MB-1 W 60m
- c. Turn right onto Trans-Canada Hwy/MB-1 W 12.5km
- d. Use the right lane to take the Trans-Canada Highway/MB-100 W ramp to Brandon 350m



- e. Merge onto Trans-Canada Hwy/MB-100/MB-101 S 39.6km
- f. Take exit 42A for Portage Avenue/Route 85 E 450m



- g. Merge onto Trans-Canada Hwy/MB-1 E 350m

Destination on Right



6. Howard Johnson 3740 Portage Ave, Winnipeg, MB